



*jordan fishwick*

**WEST DIDSBURY**  
Tintern Avenue



## Tintern Avenue, West Didsbury, M20 2LE

Guide Price £485,000



### The Property

A charming and stylish terrace property offering a superb level of living space over three floors, coupled with a fantastic location in the heart of West Didsbury, just off Burton Road. The vibrant shops, bars and restaurants of West Didsbury, along with the Metrolink are all close at hand and as such it provides a great opportunity for professionals and small families alike. Inside, there is a lovely blend of original characteristics alongside today's more modern comforts, including stripped floors, gas central heating and majority double glazed windows. In outline comprising:- Entrance hall, lounge with bay window, dining kitchen with central breakfast bar and French doors to the rear courtyard, three bedrooms and the bathroom with white suite. In addition, there is an excellent basement room with useful utility off and the loft space which has lighting and is boarded. Outside, the property is set behind a small walled garden to the front, with an enclosed walled courtyard garden at the rear.

### Directions

M20 2LE



- Attractive bay fronted terrace
- Three bedrooms
- Excellent basement & utility off
- Lounge with bay window
- Dining kitchen with French doors outside
- Bathroom with white suite
- Stripped floors & panelled doors
- GCH & majority double glazing
- Enclosed walled courtyard garden
- Superb location in West Didsbury

Postcode - M20 2LE

EPC Rating - C

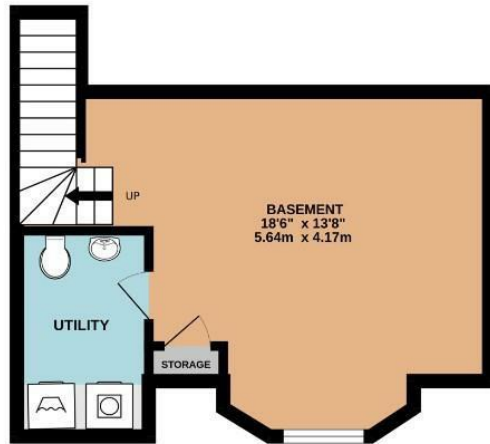
Floor Area - 1219.00 sq ft

Local Authority - Manchester City Council

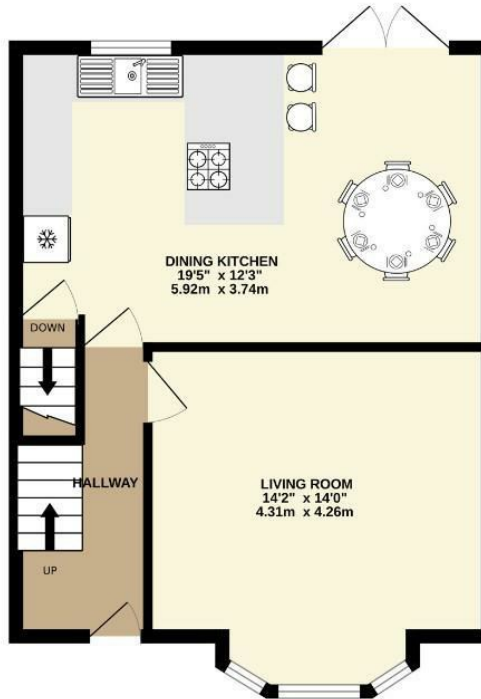
Council Tax - C



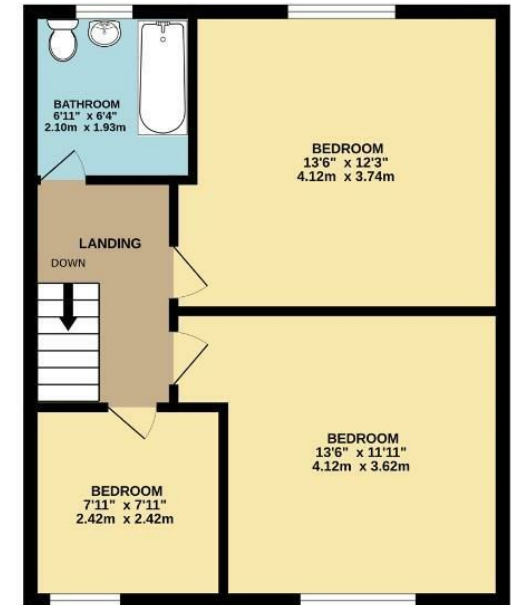
**BASEMENT**  
267 sq.ft. (24.8 sq.m.) approx.



**GROUND FLOOR**  
484 sq.ft. (45.0 sq.m.) approx.



**1ST FLOOR**  
468 sq.ft. (43.5 sq.m.) approx.



**TOTAL FLOOR AREA : 1219 sq.ft. (113.3 sq.m.) approx.**  
Measurements are approximate. Not to scale. Illustrative purposes only  
Made with Metropix ©2025



These particulars are believed to be accurate but they are not guaranteed and do not form a contract. Neither Jordan Fishwick nor the vendor or lessor accept any responsibility in respect of these particulars, which are not intended to be statements or representations of fact and any intending purchaser or lessee must satisfy himself by inspection or otherwise as to the correctness of each of the statements contained in these particulars. Any floorplans on this brochure are for illustrative purposes only and are not necessarily to scale.

Offices also at: Wilmslow, Macclesfield, Hale, Sale, Chorlton, Glossop, Manchester & Salford

757-759 Wilmslow Road, Didsbury Village, Manchester

**0161 445 4480**

didsbury@jordanfishwick.co.uk  
www.jordanfishwick.co.uk